



# CENTRAL FLORIDA INNOVATION DISTRICT

The **Central Florida Innovation District** leverages the strength of anchor institutions Florida Polytechnic University and SunTrax, America's Center for Transportation Innovation.

In an area that encompasses roughly **3,000 acres** out of **2,000 square miles** of Polk, the district will foster an ecosystem of innovation and value proximity, connectivity and collaboration.

It will build upon major state investments and the cutting-edge technology being developed at **Florida Polytechnic University** and tested at **SunTrax**, the Florida Department of Transportation's new 475-acre testing facility along the Polk Parkway.

## INDUSTRY CATALYSTS



Health Sciences & Technology



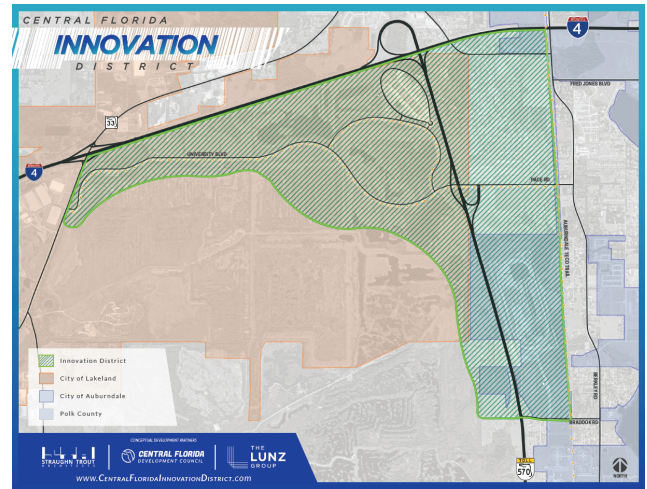
Information Sciences & Engineering



Advanced Manufacturing



Mobility & Innovation



## COMMUNITY PARTNERS

City of  
**Auburndale**

**POLK**  
COUNTY

**FLORIDA POLYTECHNIC**  
UNIVERSITY

**CITY OF**  
**Lakeland**

**SUNTRAX**

For more information, contact Javier Marin at  
**javier@cfdc.org** or **(863) 937-4430**



**CENTRAL FLORIDA**  
DEVELOPMENT COUNCIL

Polk County's  
Economic Development  
Partnership

**CentralFloridaInnovationDistrict.com**