

Fabric Face Mask

1 yard each of cotton and flannel will make 10 adult SM/MD and 1 yard cotton and Flannel will make 7 adult LG

Elastic – 7 inches for each side, or two rubber hair ties, or 1 long hair tie, or 36 inches of bias tape or some type of tie.

Cut 2 of cotton (outside)

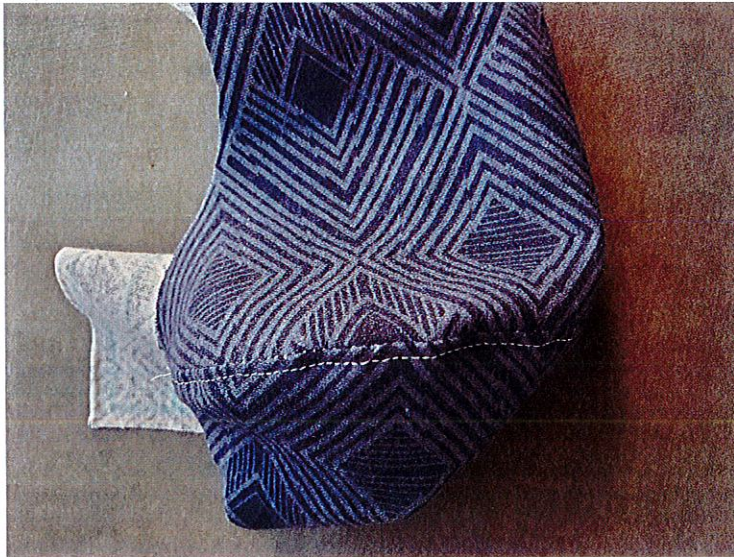
Cut 2 of Flannel (inside)

Cut 2 fusible interfacing, if you can not get fusible interfacing, use regular interfacing or anything with a tight weave as an inner layer. You can also create a pocket on the inside if you wish and insert a filter of your own preference.

Stitch 2 outsides together.

Iron fusible interfacing to inside of flannel pieces, stitch flannel pieces together.

Top stitch center seams.

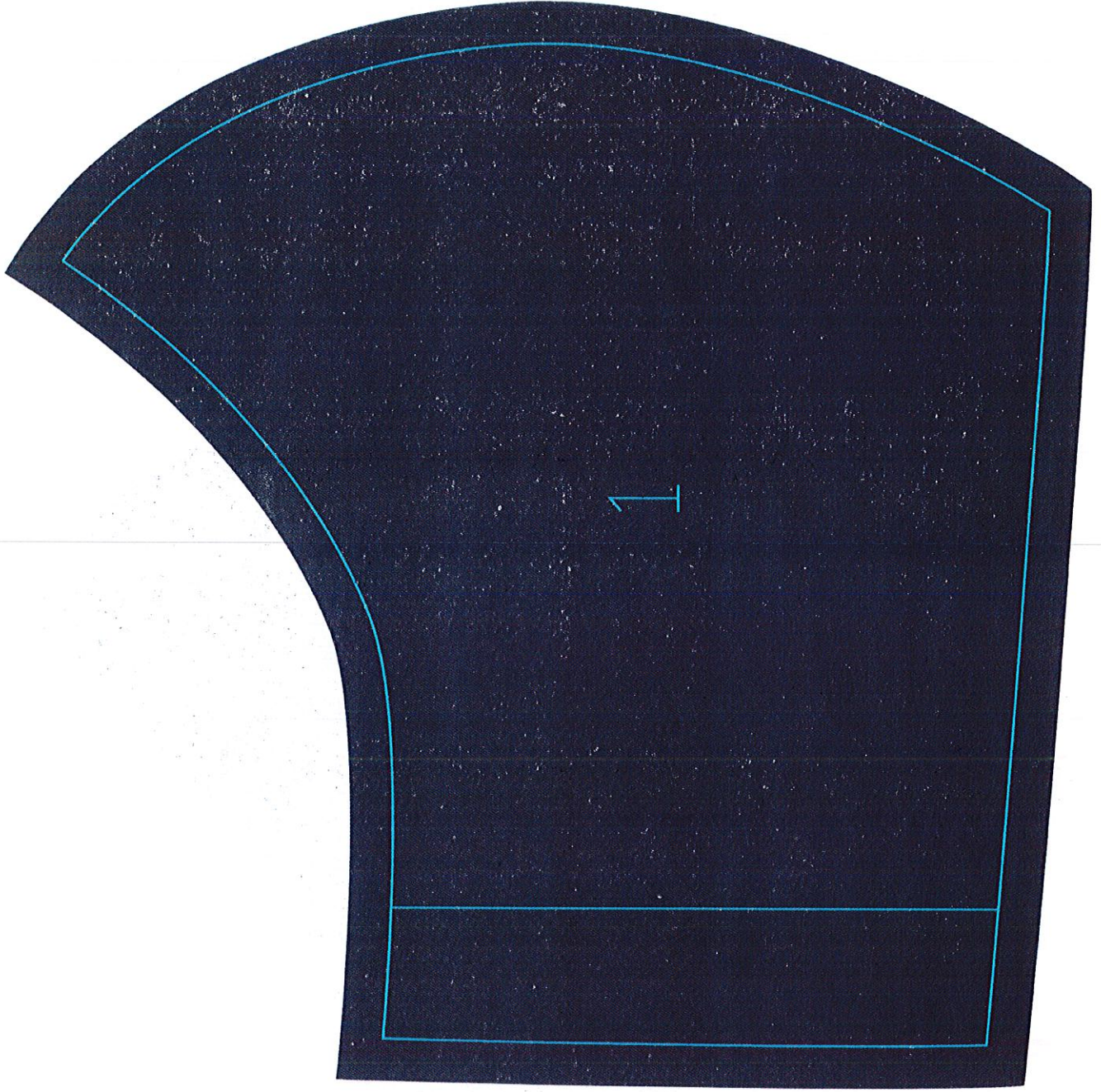


Lay outer and inner pieces together and stitch long edges.

Turn right side out, top stitch along both long edges.

Turn under both sides and insert elastic or ties and stitch sides down.

Face Mask - Adult LG



Face Mask - Adult SM/MD

