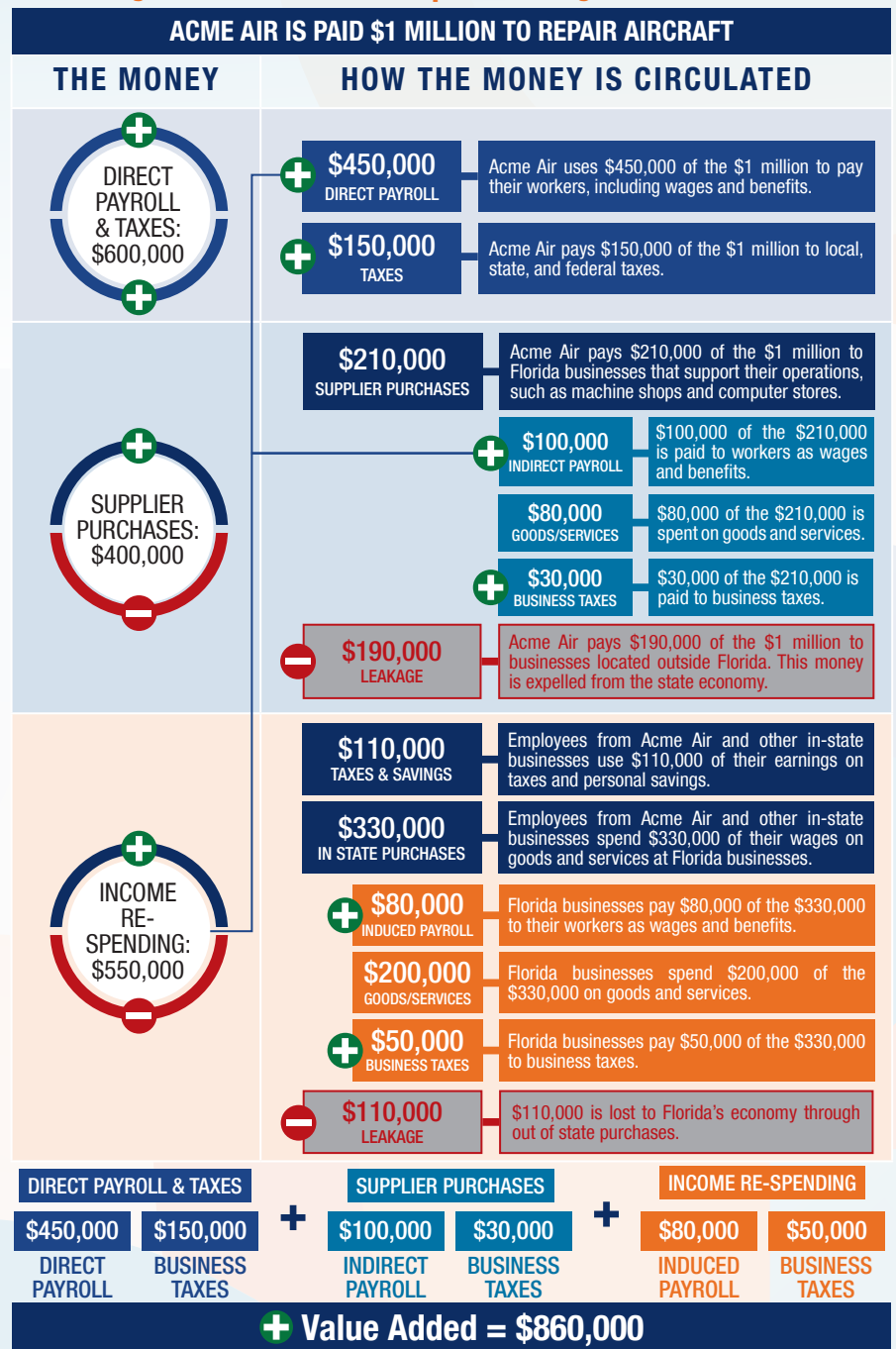
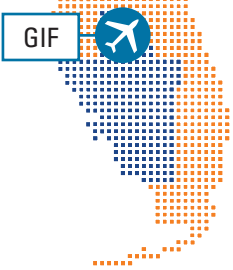


The following graphic is an example of how activity at Florida airports generates economic impacts throughout the state.



THE ECONOMIC IMPACT OF

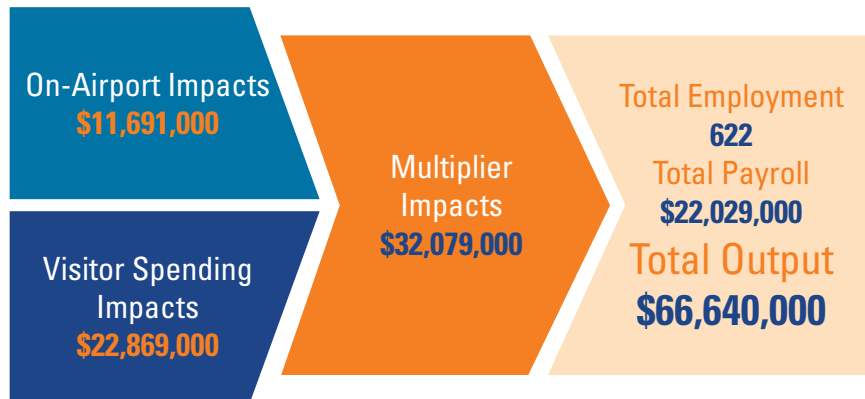
Winter Haven's Gilbert Airport (GIF)



WINTER HAVEN'S GILBERT AIRPORT

Winter Haven's Gilbert Airport is located in Polk County, approximately 43 miles east of Tampa. The airport has two intersecting runways, with the longest runway measuring 5,006 feet. The airport accommodates mid-sized general aviation aircraft and smaller business jets and serves a variety of general aviation activities.

The airport primarily supports flight training, helicopter training, and seaplane training. Pilots are able to upgrade their license or gain an aircraft maintenance certification at the airport. The airport is in an ideal location for pilots to rest and dine at local restaurants, and there are taxis and car rentals available at the airport. The airport also accommodates recreational based aircraft and aircraft maintenance. The airport is engaged in the local community and hosts events, such as Aviation Day.



Previous versions of this Study used different terminology to communicate results. The following terms were updated: Direct Impacts changed to On-Airport Impacts and Indirect Impacts changed to Visitor Spending Impacts.

Florida's Statewide Benefits From Aviation

Florida realizes significant economic benefits from aviation. The Florida Department of Transportation completed a comprehensive economic impact analysis to measure these benefits. Benefits measured in the FDOT study considered on-airport impacts, visitor spending impacts, and multiplier impacts.

Florida's 129 public-use airports (including 20 commercial service facilities) are a major economic engine of the State's economy. The aviation system keeps Florida connected to the global marketplace while simultaneously driving local economies. Florida's airports provide space and infrastructure for important activities such as manufacturing, logistics, tourism, and emergency response. Below is a summary of the total statewide economic impact as well as the impact of District 1.

STATEWIDE



DISTRICT 1



For more information regarding the results and methodology of this economic impact study, please visit <https://www.fdot.gov/aviation/economicimpact.shtm>